



# Proposed Ballot Measure: Tri-City Water Resource Recovery Facility Outfall Project

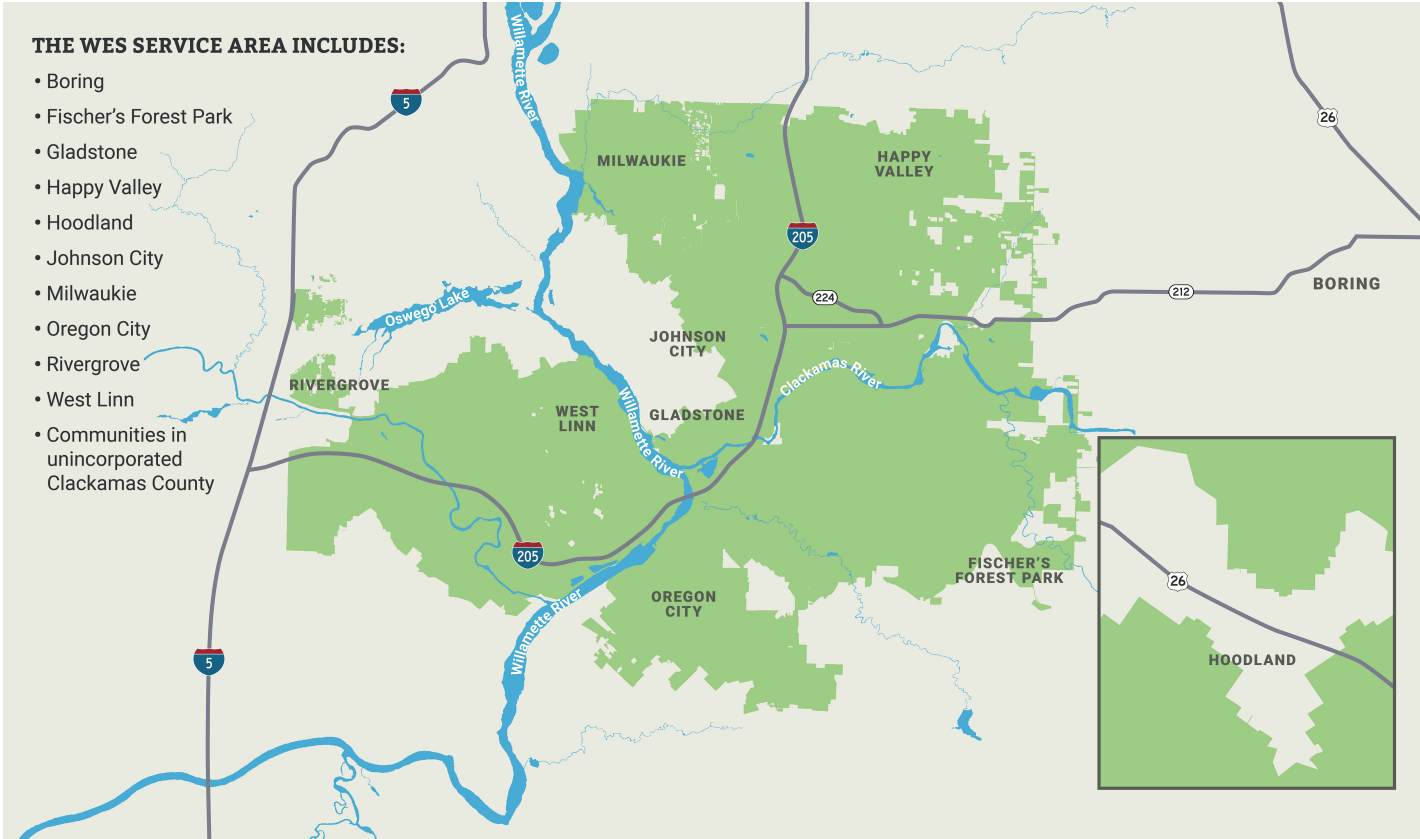
Greg Geist, Director

Jeff Stallard, Project Manager

# WES Service Area

## THE WES SERVICE AREA INCLUDES:

- Boring
- Fischer's Forest Park
- Gladstone
- Happy Valley
- Hoodland
- Johnson City
- Milwaukie
- Oregon City
- Rivergrove
- West Linn
- Communities in unincorporated Clackamas County





# Overview

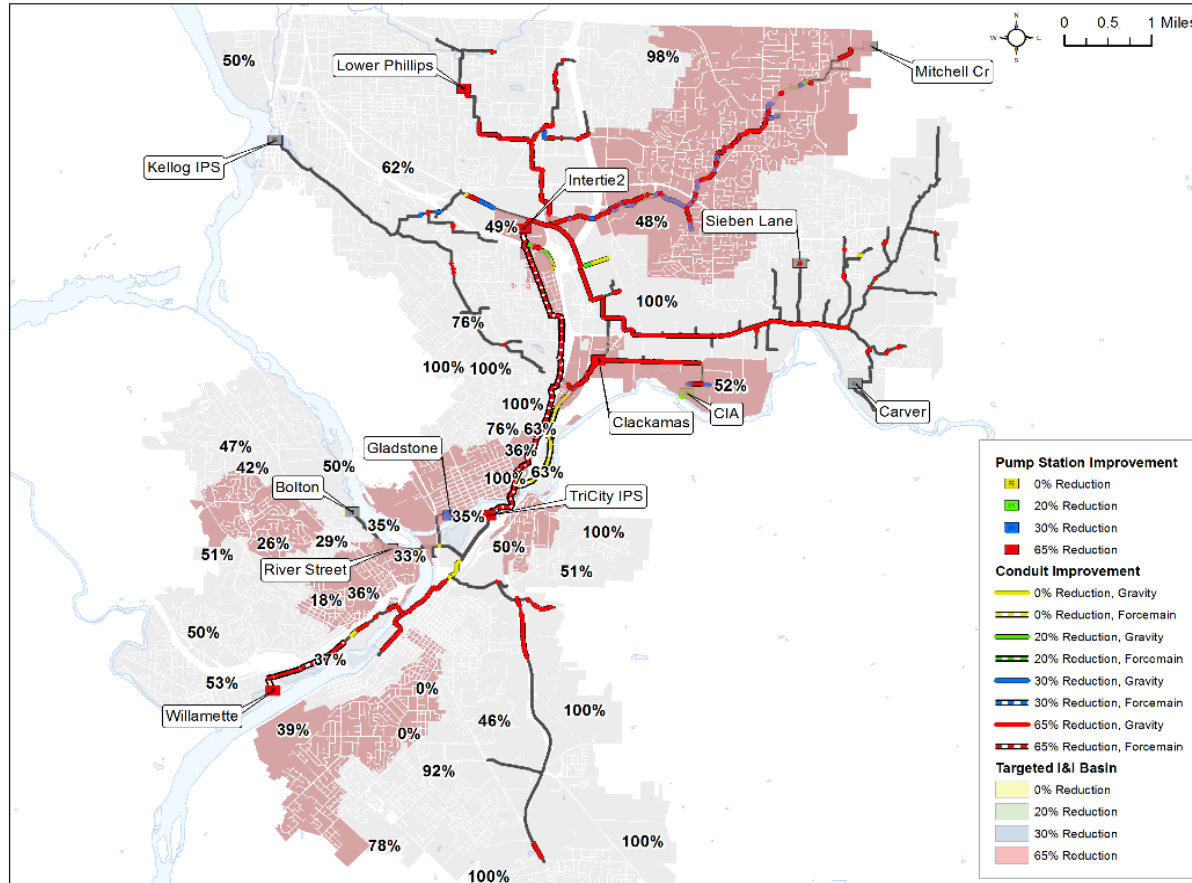
- The current outfall from the Tri-City Water Resource Recovery Facility (TCWRRF) was constructed in 1984 and is nearing its capacity during peak wet weather events.
- WES is proposing to install a new outfall pipeline that would run underneath Jon Storm Park and discharge into the Willamette River.
- The proposed outfall project, which calls for a vote of the people of Oregon City, would be funded as a component of WES's Capital Improvement Plan.
- The proposed ballot measure would not increase taxes.



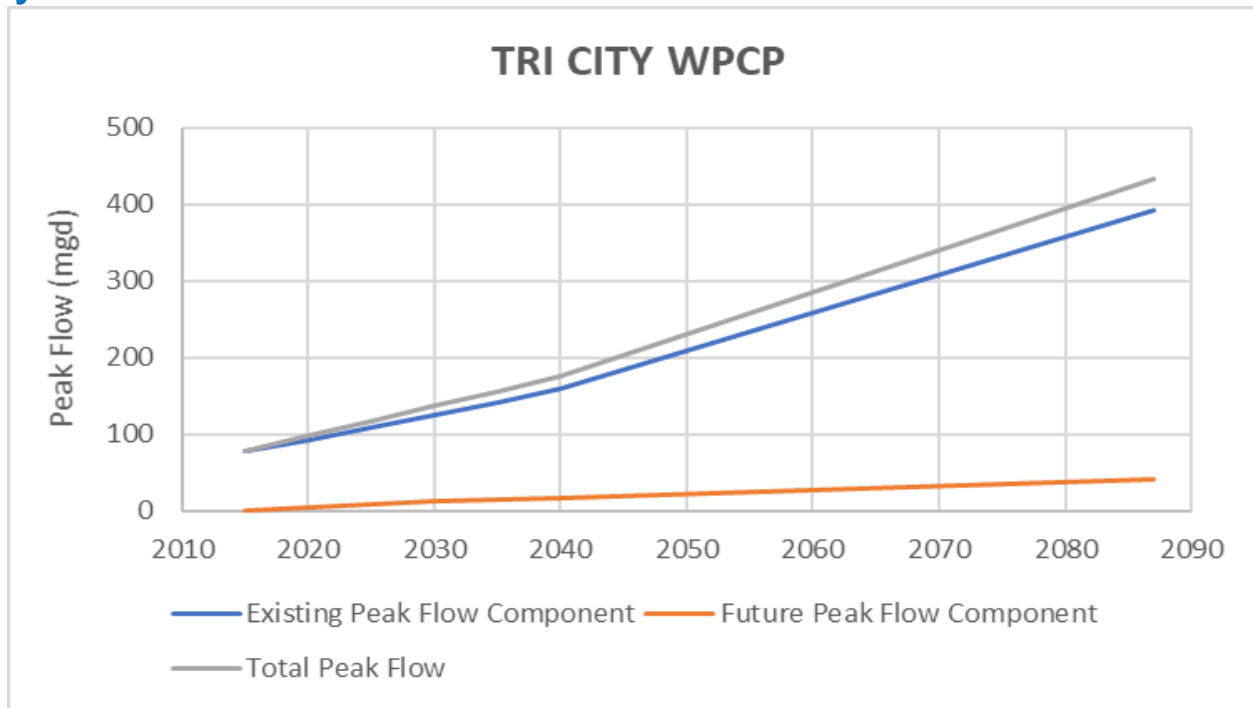
# Proposed Ballot Measure:

- WES is proposing to construct and obtain easements for an outfall pipeline underneath Jon Storm Park.
- The Oregon City Charter calls for a vote of the people regarding the easements and for the construction of permanent structures unrelated to recreation on park property.

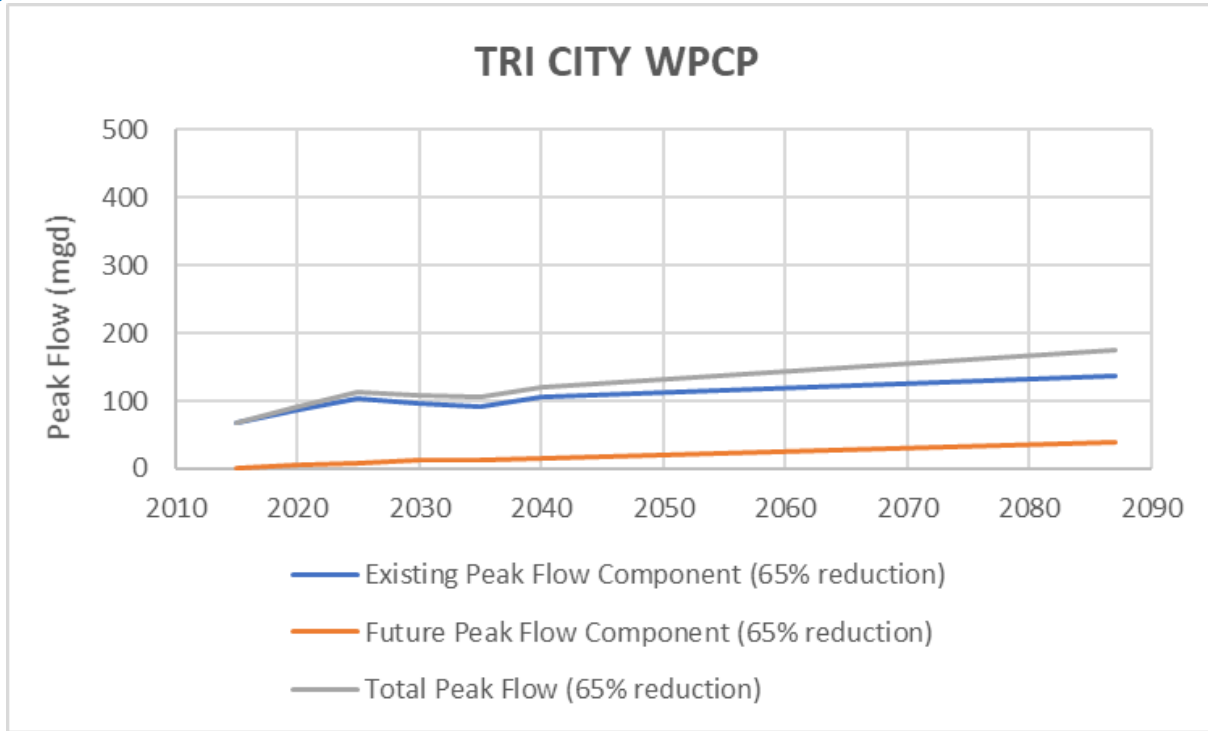
# Inflow and Infiltration



## Tri-City Flows – No Inflow and Infiltration Reduction

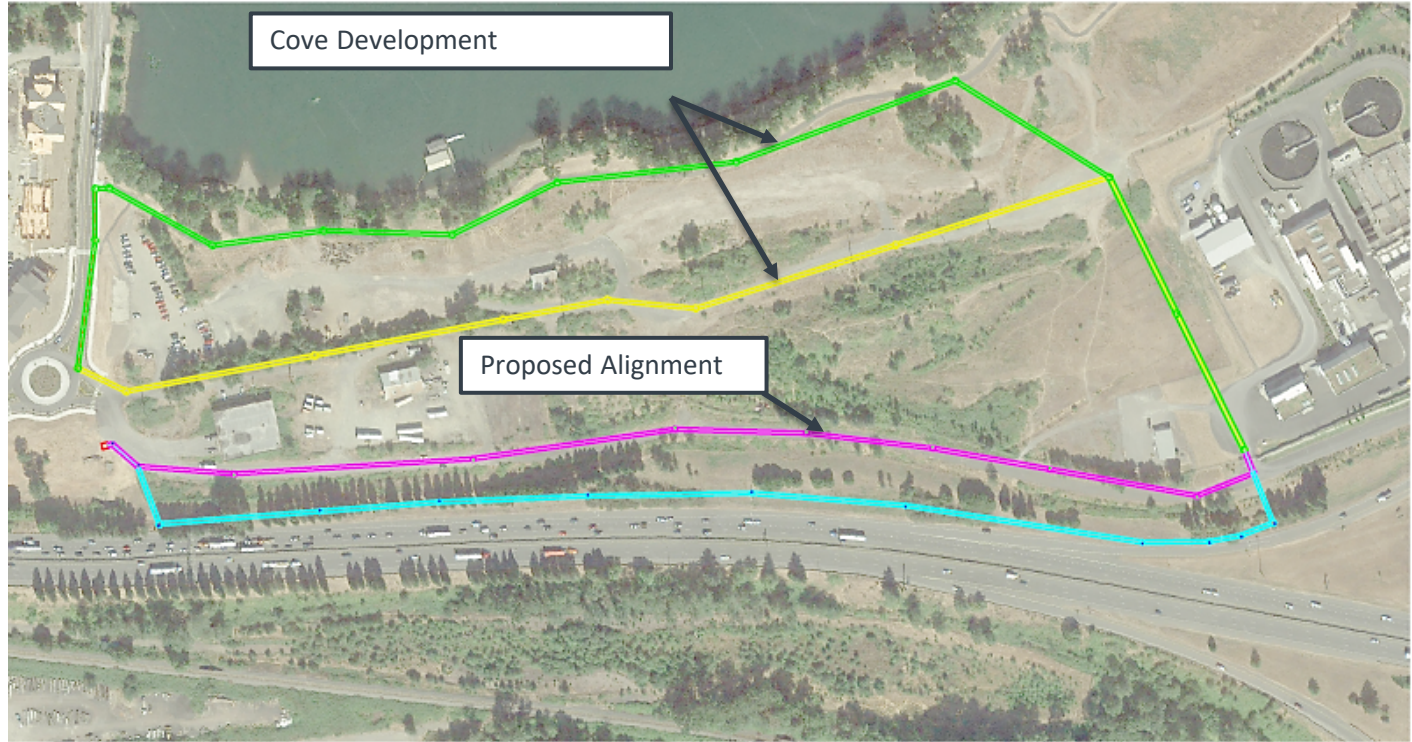


# Tri-City Flows – Inflow and Infiltration Reduction



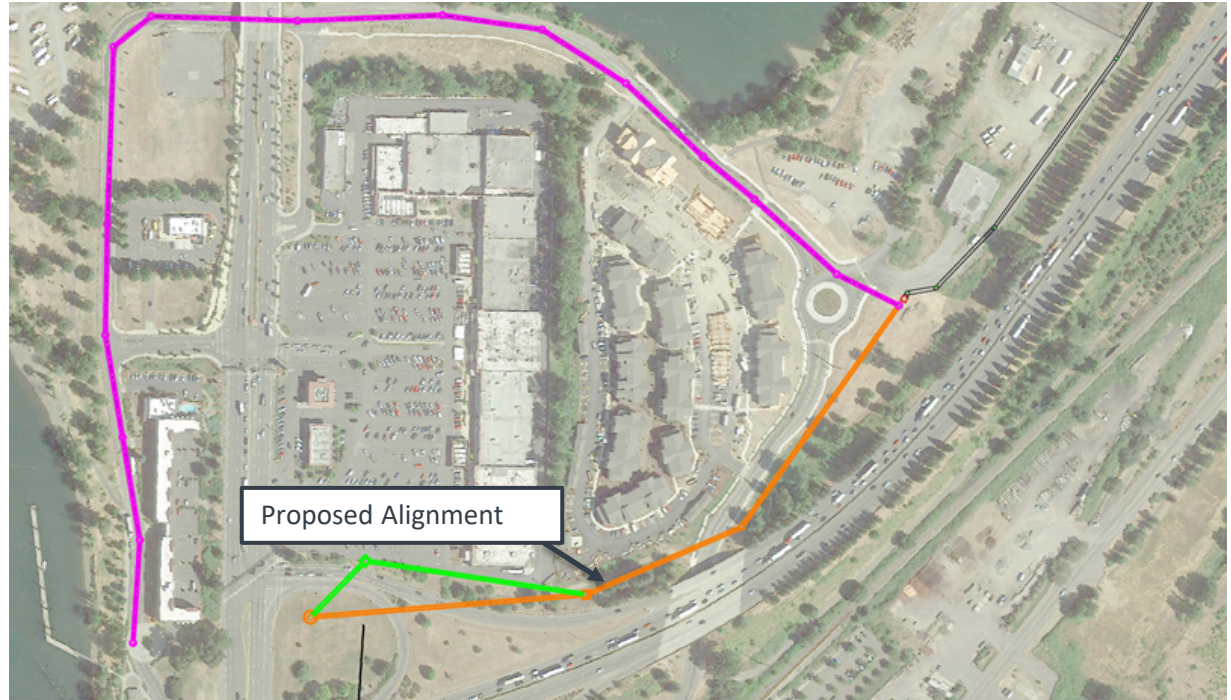
# Outfall Routing Study: Conducted by Jacobs Engineering Group in Fall of 2019

- First step in proposed project was to perform a routing study.
- The alignment was broken into **three pieces** starting at the plant.

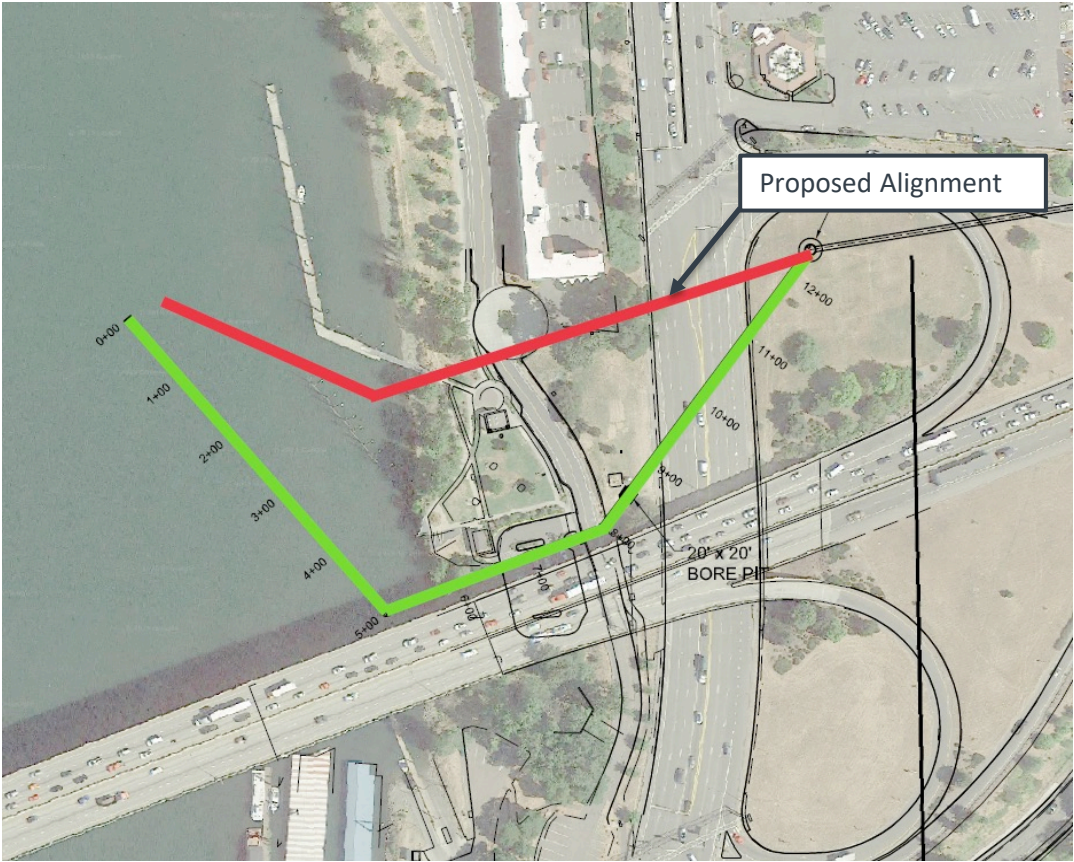


# Outfall Alternatives Evaluation

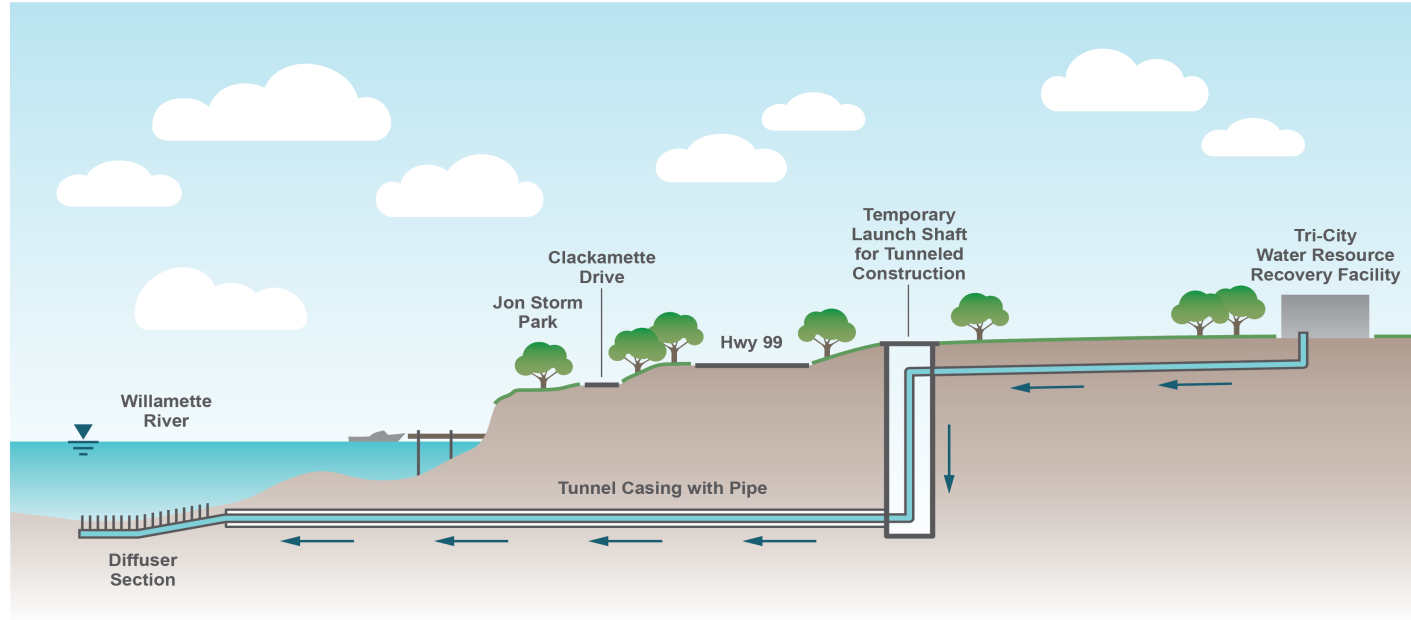
- Study analyzed alignments with other planned projects along the corridor: ODOT Bridge and Cove Development.
- Study analyzed gravity flow.
- Construction methods would include Traditional Open Cut and Tunneling.



# Proposed Outfall Location and Route

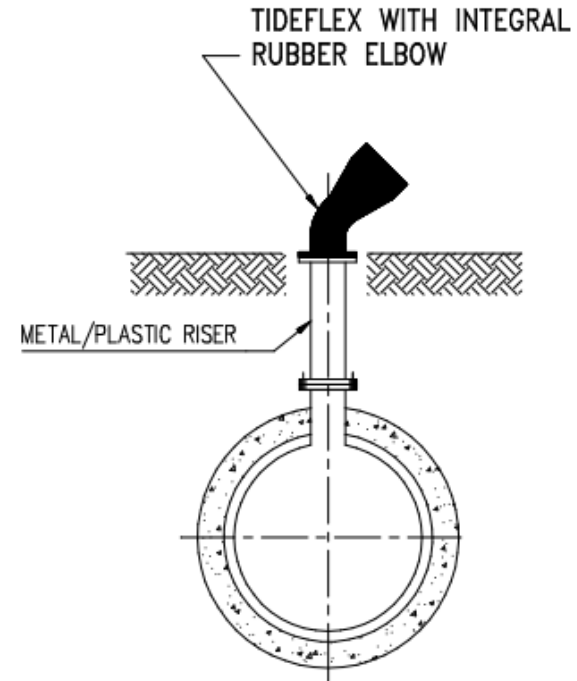
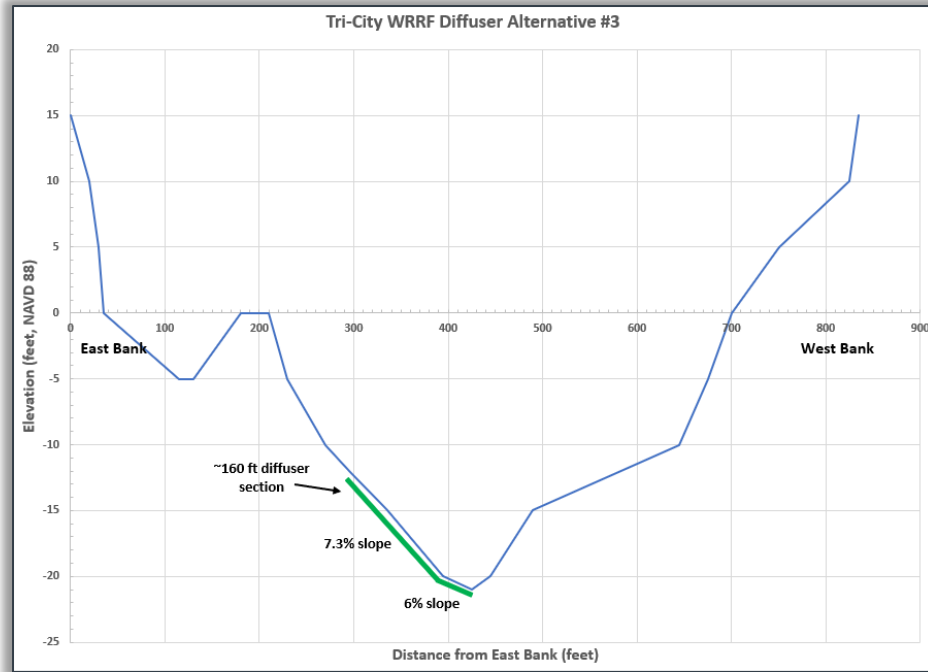


# Proposed Tunneling Technologies



NOT TO SCALE

## Diffusers – Portion of Outfall extended into the water flow



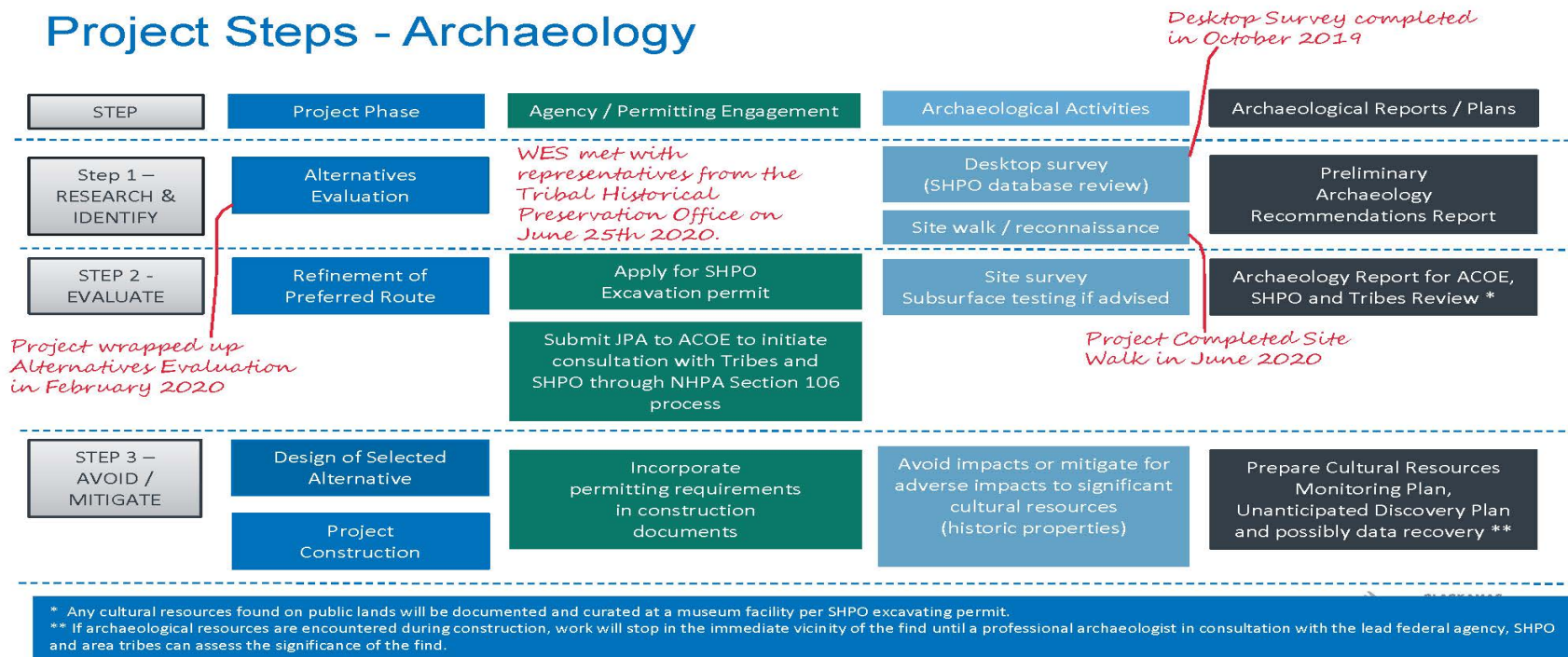
Portion of pipeline above river bottom is just the diffuser valve.

## Proposed Project Alignment Next Steps

- Finalize Size (90") and Pipe Material (FRP).
- Develop a permit strategy.
- Continue engaging with community and stakeholders.
- Oregon City Ballot Measure: November 3.



# Project Steps - Archaeology

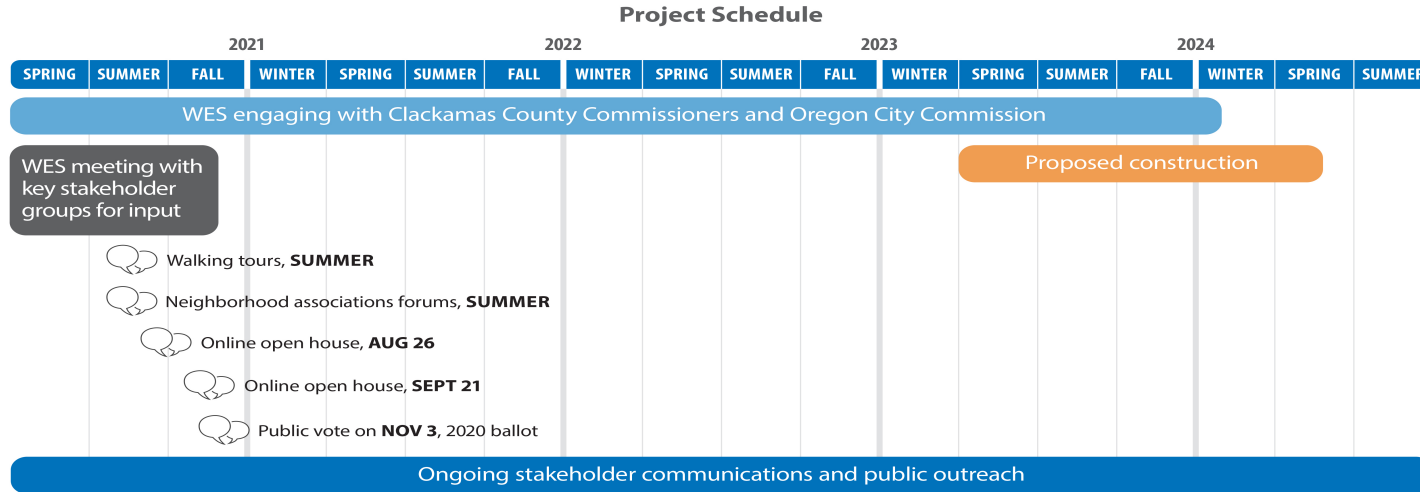




# Park Mitigation

- If the measure passes, WES would restore the park to its original condition and in addition provide for mitigation improvements identified by the Oregon City Parks and Recreation Advisory Committee.
  - PRAC recommends “mitigation going towards a tree inventory and some mediation of hazard trees; any remaining funds to be used for master planning of Jon Storm, Clackamette parks.”

# Public Involvement Plan



Public Involvement Plan Timeline  
[www.tricityoutfall.info](http://www.tricityoutfall.info)

# QUESTIONS

